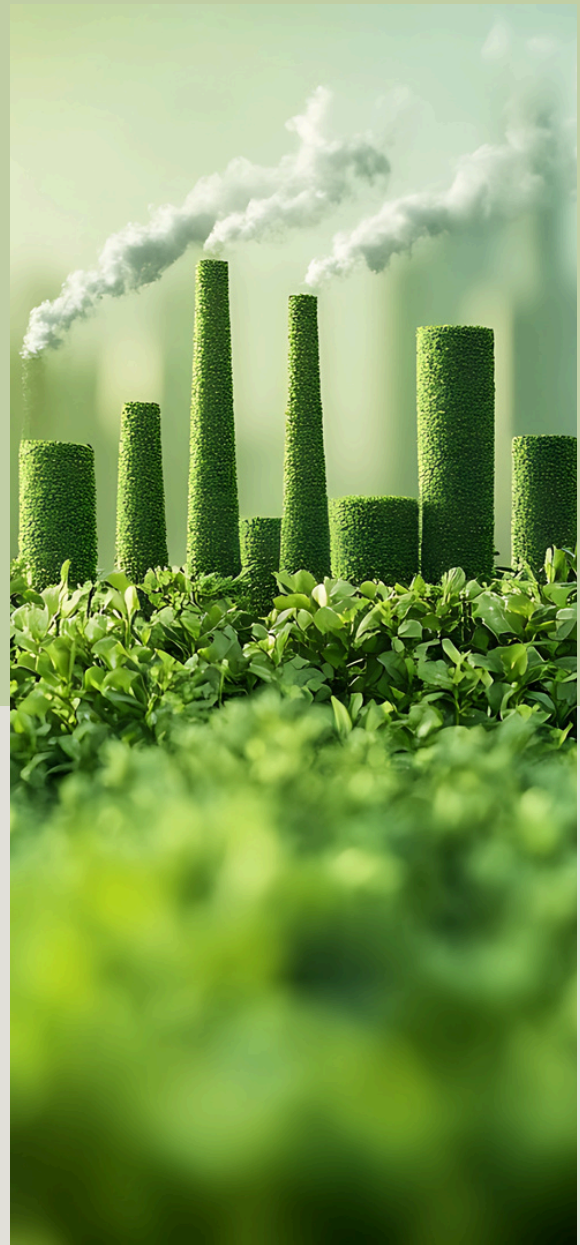


SUSTAINABILITY AND CLIMATE STRATEGY



EXECUTIVE SUMMARY

This strategy integrates the Trust's Estates Vision and Estates Strategy with sustainability objectives to deliver safe, inspiring, and carbon-neutral learning environments. It sets out our vision, strategic pillars, decarbonisation roadmap, and implementation framework, ensuring alignment with statutory compliance, operational efficiency, and educational excellence.



INTRODUCTION

Southport Learning Trust is committed to embedding sustainability across all operations, teaching, and community engagement. This document outlines our approach to achieving carbon neutrality, reducing environmental impact, and fostering responsible global citizenship.

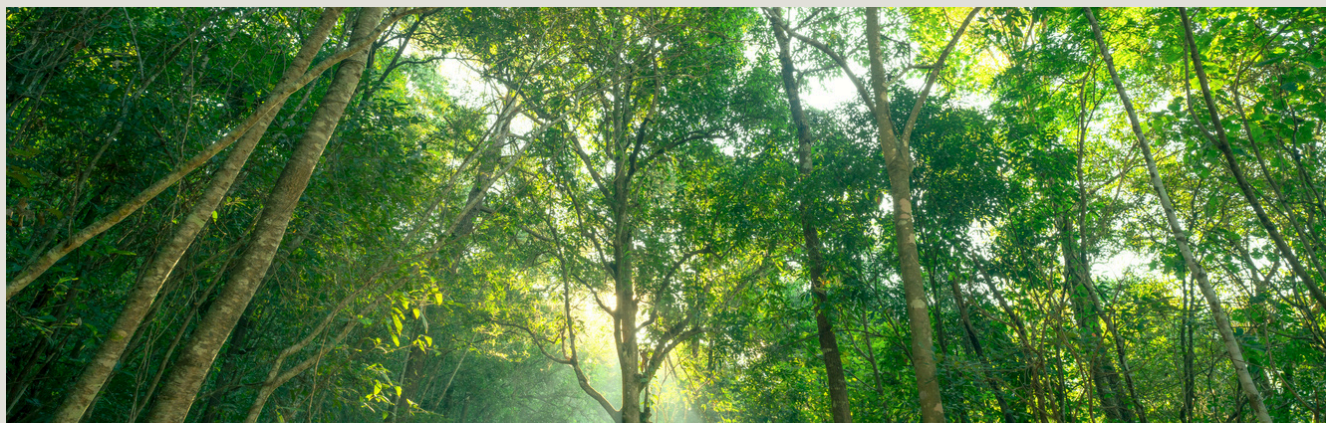
STRATEGIC VISION

Our Trust Estates vision is to create

safe, inspiring, and future-ready learning environments

that actively contribute to a sustainable planet. We aim to lead by example in education by embedding sustainability into every aspect of our operations, curriculum, and community engagement. We endeavour to inspire our students, staff, and wider communities to embrace environmentally responsible practices, foster social equity, and operate with transparent governance, ultimately contributing to a thriving planet for current and future generations.

CORE COMMITMENTS



ALIGN TRUST POLICIES WITH DfE FOUR PILLARS OF DECARBONISATION

DfE has set four pillars of decarbonisation:

- **Decarbonisation:** Reducing carbon emissions through energy efficiency, such as upgrading insulation or optimising heating.
- **Adaptation and Resilience:** Preparing for climate risks like flooding or overheating with measures like improved drainage.
- **Environment and Biodiversity:** Enhancing green spaces and biodiversity through initiatives like [The National Education Nature Park](#)
- **Climate Education and Green Careers:** Embedding sustainability in the curriculum to equip students with knowledge and skills for a low-carbon future.

INTERIM MILESTONES

2032

Reduce carbon emissions by **50%** through targeted energy-saving measures and renewable installations.

2037

Reduce carbon emissions by **75%** through targeted energy-saving measures and renewable installations.

2042

Eliminate single-use plastics across all schools and operations.

CARBON NEUTRALITY BY 2050

Achieve net-zero emissions across all Trust operations through energy efficiency, renewable energy adoption, and sustainable procurement.

SUSTAINABLE ESTATES

Ensure all buildings meet high environmental standards prioritising retrofitting and green technologies to reduce energy consumption and operational costs.

EDUCATION FOR SUSTAINABILITY

Embed sustainability principles into the curriculum, empowering students with knowledge and skills for green careers and responsible citizenship.

COMMUNITY & PARTNERSHIPS

Collaborate with Sefton local authority, industry partners, and consultants to secure external funding for sustainability and decarbonisation projects, while promoting community-wide engagement.

PROCUREMENT AND SUPPLY CHAIN

Collaborate with current contractors and suppliers on decarbonisation and ensure that new contracts align with the Trust Sustainability and Climate strategy.



INTEGRATION WITH ESTATES STRATEGY

Sustainability will be embedded in all estates decisions, including planned preventative maintenance, capital development, and space optimisation. All new builds and refurbishments will meet BREEAM or equivalent standards. Asset Management Systems will track energy, water, and waste data to inform strategic decisions.

INTEGRATING SUSTAINABILITY & DECARBONISATION INTO EDUCATION

Embedding sustainability and decarbonisation within education requires a whole-school approach that combines operational practices with curriculum innovation. Schools should model sustainable behaviours through energy-efficient buildings, renewable energy adoption, and waste reduction, while simultaneously incorporating environmental literacy into teaching across all subjects. Practical learning experiences—such as eco-projects, biodiversity initiatives, and green technology demonstrations—help students connect theory to real-world impact. By fostering partnerships with industry, local authorities, and sustainability experts, schools can secure resources and expertise to advance decarbonisation goals. This integration not only reduces the institution's carbon footprint but also equips learners with the knowledge and skills needed for future green careers and responsible global citizenship.

INTEGRATING TRUST'S DECARBONISATION STRATEGY INTO SCHOOL COMMUNITIES

To successfully embed decarbonisation within school communities, the Trust must adopt a collaborative and participatory approach. This involves engaging students, staff, and families in sustainability initiatives that are visible and meaningful—such as energy-saving campaigns, waste reduction programs, and biodiversity projects on school grounds. Curriculum integration is key, ensuring that lessons link climate action to real-world practices and future careers. Schools can host workshops, eco-clubs, and community events to raise awareness and encourage behavioural change, while celebrating achievements to build momentum. By working with local authorities, industry partners, and consultants, the Trust can secure external funding and expertise, turning decarbonisation goals into shared community projects that foster pride, ownership, and long-term impact.

PROCUREMENT & SUPPLY CHAIN INTEGRATION FOR SUSTAINABILITY & DECARBONISATION

Embedding sustainability into procurement and supply chain practices is essential for achieving the Trust's decarbonisation goals. All purchasing decisions should prioritise products and services that meet high environmental and ethical standards, such as energy-efficient equipment, recycled or recyclable materials, and locally sourced goods to reduce transport emissions. Contracts must include sustainability clauses requiring suppliers to demonstrate carbon reduction commitments and transparent reporting. The Trust aligns with national frameworks for procurement, engages suppliers in collaborative improvement programs, and leverages economies of scale to secure green technologies at competitive prices. By integrating sustainability criteria into tendering and supplier evaluation, the Trust ensures that every investment supports its carbon neutrality targets while promoting responsible practices across the entire supply chain.

LEADERSHIP, GOVERNANCE & DELIVERY

TRUST SUSTAINABILITY LEAD

Trust Board will appoint a Trust Sustainability Lead. Sustainability Lead will be responsible for reporting to the Trust Board on sustainability KPIs and implementation of the strategy.

SCHOOL SUSTAINABILITY CHAMPIONS

Each school has a representative to coordinate local initiatives and implement and monitor the school Climate Action Plan.

ECO COMMITTEES

Groups involving staff and pupils are established at every school to encourage participation.

TRUST BOARD OVERSIGHT

Progress and policies are reviewed annually to monitor accountability.

IMPLEMENTATION FRAMEWORK

- **Baseline Assessment and Annual Monitoring:** Complete audits of energy, water, waste, and carbon annually.
- **Climate Action Plans:** Develop tailored Climate Action Plans for each school guided by the DFE pillars. A template plan will be provided to each school.
- **Budget Alignment:** Integrate sustainability into capital and maintenance budgets.
- **Training:** Provide sustainability training for estates and teaching staff.

MONITORING & REPORTING

KPIs will track energy use, carbon emissions, waste diversion, and biodiversity. Updates will be provided to the Resources Committee, with annual reports to the Trust Board.



ALIGNED TRUST CLIMATE ACTION PLAN

The following phased Climate Action Plan outlines specific steps to achieve our sustainability and estates integration goals.

SHORT TERM (2025 - 2027)

- Complete baseline audits for energy, water, waste, and carbon across all sites.
- Develop school Climate Action Plans with clear responsibilities. Support is available through Sefton's energy team including an audit as part of the Trust SLA.
- Working with partners and consultants to identify and secure external sustainability and decarbonisation funding and reduce energy consumption.
- Integrate sustainability into curriculum particularly and enrichment activities e.g. Green Careers Work Related Learning.
- Implement quick-win energy efficiency measures (LED lighting, insulation improvements).
- Launch staff and student sustainability awareness campaigns.
- Waste minimisation through promotion of double-sided printing, increased digital communication and resource use, paper reuse, and lamination for frequently used documents.
- Pupil and Staff well-being developed through encouraging PE, sport and outdoor schemes e.g. Forest School, Beach Clean Ups, Active Sefton and Duke of Edinburgh Award Scheme and monitored through the Well Schools Framework.
- Recycling infrastructure: Clearly labelled bins, informative signage such as switch off signage and awareness campaigns
- Establish recycling stations and begin reducing single-use plastics in catering.
- WEEE Disposal: The Trust ICT Manager oversees responsible and secure disposal of equipment with approved partners, ensuring correct data handling.
- Low-Carbon Travel: Introduction of electric vehicle programs where opportunity arises, increased bike storage, encouragement of walking/cycling to school, development of School Streets, encourage take up of Cycle to Work scheme and car-sharing schemes.
- Implementing Procurement Principles: Preference is given to UK sourced, energy-efficient, recyclable, and low-emission products where possible.
- Responsible use of AI.

MEDIUM TERM (2028 - 2035)

- Install on-site renewable energy systems (solar PV, heat pumps) where feasible.
- Expand biodiversity initiatives (wildflower planting, habitat creation).
- Introduce rainwater harvesting and water-saving technologies.

LONG TERM (2036 - 2050)

- Achieve full elimination of single-use plastics by 2042.
- Complete retrofitting of all inefficient building elements with sustainable alternatives.
- Reach carbon neutrality by 2050 through continued investment in renewables and offsetting.
- Maintain continuous improvement through annual reviews and GEMS benchmarking.
- Transition Trust fleet to low-emission or electric vehicles

SOUTHPORT LEARNING TRUST DECARBONISATION ROADMAP

